



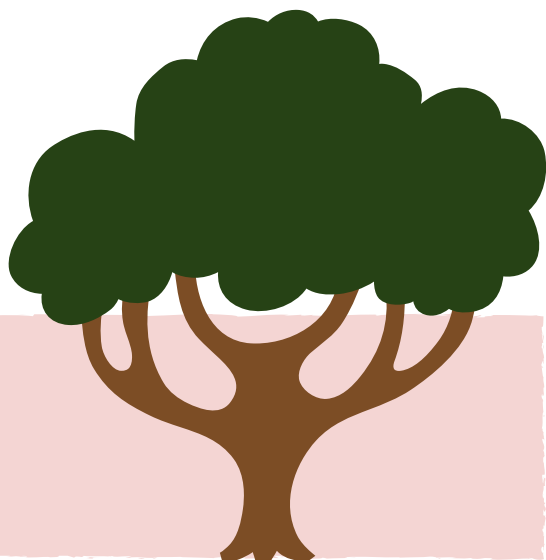
TREE GUIDE

STIÙIREADH AIRSON CRAOBHAN

Winter is a great time to plan for the garden year ahead - so why not think about incorporating trees into your design?

Whether it is a single ornamental species for a small garden or a woodland on your land, we have you covered.

February and March can be the perfect time of the year to plant your new trees.

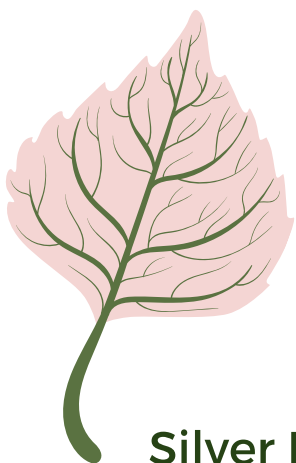


URRAS OIGHREACHD
GHABHSAINN
GALSON ESTATE TRUST



SILVER BIRCH

With its pale silvery bark and delicate, graceful crown this makes a wonderful choice for your garden.



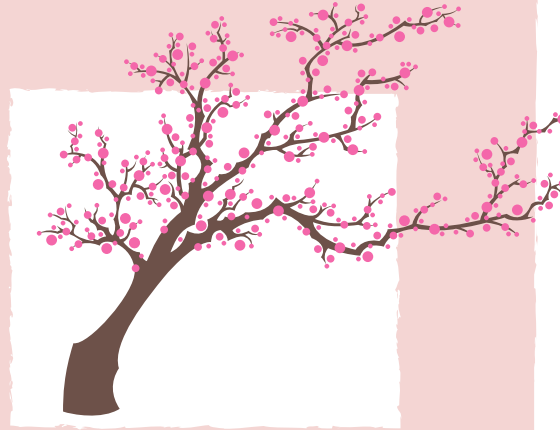
Birch are generally unfussy as to the type of soil, amount of sunlight and direction they face. They do however prefer well draining soil and avoid planting it in deep shade.

Silver Birch are a wonderful choice if you have a small garden - their canopy remains quite open even as mature trees and they are fast growing.



WINTER FLOWERING CHERRY

Though they will always be a symbol of the Spring, the early flowering cherry will provide some much needed colour in late winter.



The winter-flowering cherry or 'Autumnalis Rosea' like full sun and will give interest in flower and foliage throughout the year.

These work beautifully as a stand-alone ornamental tree - they only reach 4 X 4 metres across a 20 year period.



URRAS OIGHREACHD
GHABHSAINN
GALSON ESTATE TRUST



SEA BUCKTHORN

Easy to spot a mile away by its bright apricot-coloured berries, which can be used in a variety of culinary and health ways!



They are a great choice for Lewis as they grow naturally on coastal environments and are planted as shelterbelts, windbreaks to conserve fragile sand dunes.

If you have the space, grow a number of them together to form a hedge for maximum impact.



URRAS OIGHREACHD
GHABHSAINN
GALSON ESTATE TRUST



WILLOW

There are many gorgeous varieties of willow to choose from - goat, crack, white, pussy and weeping, to name but a few.

Creating a living willow structure is a great investment for your garden - [here](#) is a practical guide from the RHS on how to achieve this.

Willow prefer damp conditions and they are easy to grow - they do prefer a sunny spot and protect them with a tree guard from deer when they are young.



URRAS OIGHREACHD
GHABHSAINN
GALSON ESTATE TRUST



WITCH HAZEL

These lovely trees can be planted anytime between Autumn and early Spring- before the first green shoots appear.



Keep them well watered when they are young, especially during dry spells and choose an open, sunny spot as they do like to spread out.

Their flowers have a lovely, fragrant scent and come in shades of yellow, red and orange.



URRAS OIGHREACHD
GHABHSAINN
GALSON ESTATE TRUST

USEFUL LINKS

RHS

Scottish Forestry.

The Woodland Trust

